

# String Quartet KV. 421 (nr. 15)

for 2 violins, viola and cello

W. A. MOZART (1756-1791)  
KV. 421

Allegro.

Violino II.

5

10

15

20

25

28

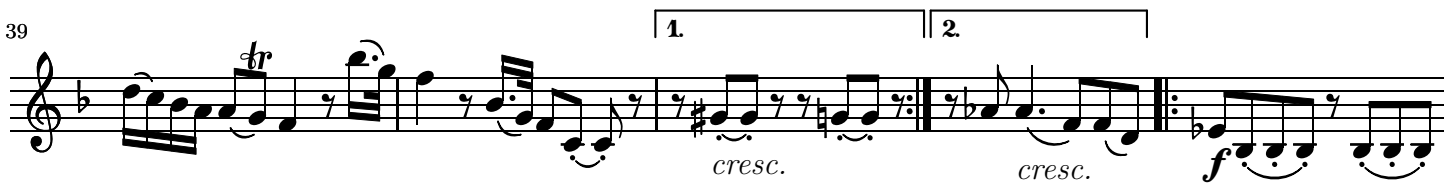
32

Public Domain

36



39



44



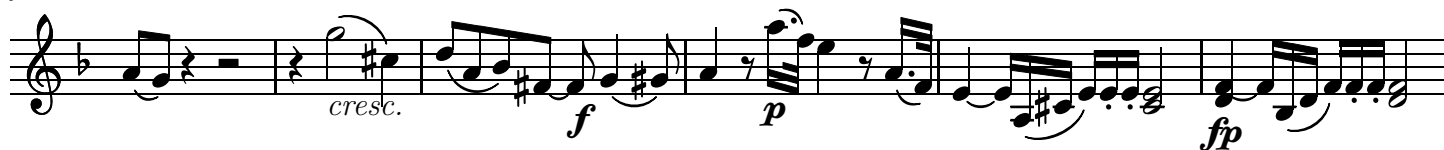
51



58



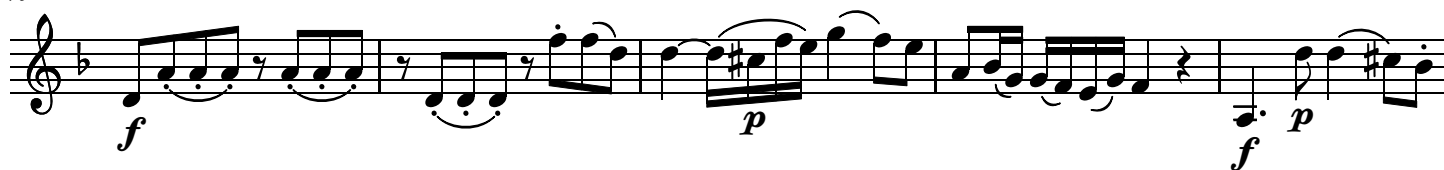
64



70



75



80 *tr* *f* *p* *fp* *f* *p*

85 *sf* *sf* *p* *cresc.* *p*

90 *f* *p*

95 *mf* *p*

98 *cresc.* *p* *f*

102 *p* *sf* *cresc.* *f* *p* *sf* *cresc.* *f*

107 *p*

110 *sf* *sf* *p* *tr* *cresc.* *cresc.*

116 *f* *p* *f*

## Andante.

Violino II.

The musical score for Violino II, KV. 421, Andante, is written in 6/8 time. It consists of eight staves of music, with measures numbered 6, 12, 18, 23, 29, 35, and 42. The key signature has one flat (B-flat). The dynamics and articulations are as follows:

- Staff 1 (Measures 1-5): *p*, *mf*, *p*, *tr*.
- Staff 2 (Measures 6-11): *cresc.*, *f*, *p*, *p*, *f*, *p*.
- Staff 3 (Measures 12-17): *pp*, *mf*, *p*, *mf*.
- Staff 4 (Measures 18-22): *p*, *tr*, *cresc.*, *f*, *p*, *mf*.
- Staff 5 (Measures 23-28): *p*, *f*, *p*, *p*. Includes first and second endings.
- Staff 6 (Measures 29-34): *p*.
- Staff 7 (Measures 35-41): *cresc.*, *p*, *cresc.*, *p*, *cresc.*.
- Staff 8 (Measures 42-47): *mf*, *p*.

47

54

60

66

72

77

82

*f* *p* *cresc.* *p*

*mf* *cresc.* *p* *tr* *cresc.* *f* *p*

*p* *f* *p* *pp* *mf*

*p* *p* *mf* *p* *tr*

*cresc.* *f* *p* *mf* *p*

*f* *p* *mf* *f* *p*

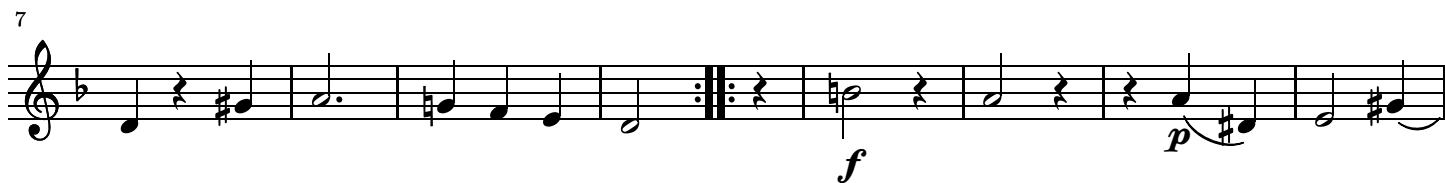
*cresc.* *f* *p* *cresc.* *p*

# MENUETTO. (Allegretto.)

KV. 421

Violino II.

*f*



Menuetto D.C.  
KV. 421

Allegro ma non troppo.



[illegible]

63



67



71



75



87



93



98



103





108



Più Allegro.



120



126



135

